



## KNIME Team Space - Share your Work

KNIME can now be used in a team to share work with all team members. KNIME users can benefit from the efforts of all the other coworkers by keeping data files together with data analysis workflows in one central shared place. Also metanodes can be used as a reference to the centrally stored version by all team members in their local workflows. Take a closer look at KNIME Team Space - the extension to KNIME Desktop sharing your work.

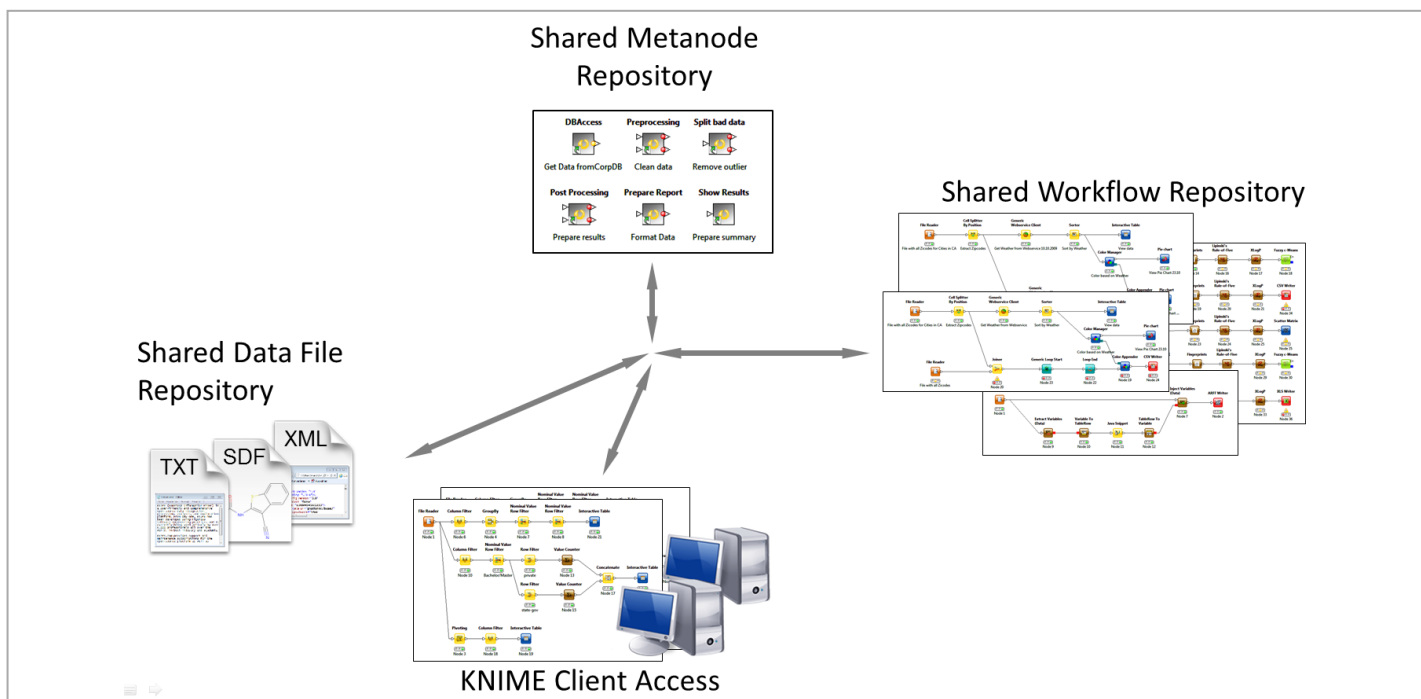


Figure 1: KNIME clients can up- and download workflows to and from a shared storage that can also hold data files and pre-configured metanodes for easy, integrated workflow construction

### Store and Share Workflows

KNIME Team Space enables you to collaborate with your team. KNIME workflows can be created with the regular KNIME Desktop and then stored, edited and downloaded from a connected shared storage space. This space can be accessed by all team members in addition to the local workspace in KNIME for central workflow management.

The KNIME Team Space is integrated in the regular KNIME client via a new view. This makes it very easy for existing KNIME users to benefit from the new capabilities and there is no need for additional training.

Workflows can be downloaded, edited and executed on the KNIME client, or they can be edited and saved directly to the shared team space.

KNIME Team Space is a great way of sharing your work with your team.

### Advanced File Handling

KNIME Team Space also helps you organize your data. Not only are your workflows stored here, but all the data files you need for your project, such as text, XML, SDF, or table files. One or multiple shared workspaces can be linked to the KNIME Team Space. Inside the shared space you can create workflow groups or sub directories to organize your workflows and store additional data files. Files can also be shared on a multi-platform basis, so that users working on Windows, Linux or Mac can all share their work. This makes the organization of your data related to projects, business goals and groups much easier and much more efficient. Aided by a clear structure of your project-related information, your goals can be achieved a lot more efficiently as you do not need to search for the relevant data files when running your data analysis workflow.

### Linked Metanode Store

KNIME Team Space can also accommodate metanodes in the shared repositories. The metanodes can be created in the regular way in KNIME and dropped into the repository. There they can be used by all team members to construct new workflows. The metanodes can either be used as static copies or as links. This means that whenever a centrally-stored metanode is configured differently, the workflow is updated to the latest version automatically the next time it is run. This is a great way of standardizing how your team members perform data analysis tasks or access databases, since you can create a preconfigured set of metanodes that has already all the settings required for immediate execution, such as database connection information for example. Whenever this information changes, you only have to modify it at a single location.

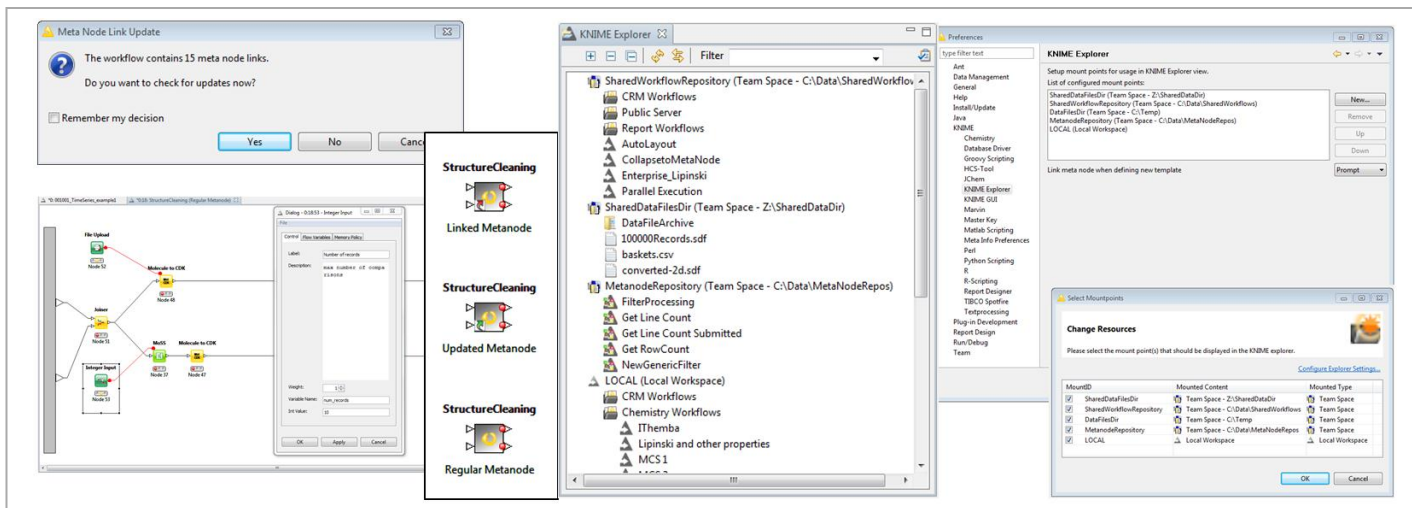


Figure 2: The KNIME Team Space explorer view, linked vs. static metanodes, metanode configuration, and management of shared resources

## Team Space Features

- Shared workflow repository
- Shared data space
- Shared metanodes

Includes KNIME Professional

- Support for all KNIME features
- Commercial support agreement
- Priority product updates and priority bug fixes

KNIME Team Space extends your open-source data analytics platform and delivers maintainable, shareable functionality for your professional usage of KNIME.

## KNIME Products

KNIME grows to accommodate your demand for data analytics. While KNIME Team Space suits small teams, the KNIME Server provides support for a full corporate setting including user authentication, remote execution, scheduling, SOA integration and a configurable web browser user interface. When combined with KNIME Cluster Execution the workflows can be sent to a compute cluster for parallel execution.

Contact KNIME.com at the address below to obtain more details about the KNIME product suite.

## Software & Licensing

### Operating System

**Windows**  
Windows XP, Vista, Windows 7, Windows Server 2008 (32 and 64 bit)

**Linux**  
SUSE 10 and 11, Linux Fedora 10, Red Hat Enterprise Linux 5, Ubuntu (32 and 64 bit)

**Mac**  
OS X 10.5 Leopard, 10.6 Snow Leopard

### Licensing

KNIME Team Space is available under an annual license model based on the number of users. It includes professional support for KNIME Desktop.

Cluster Execution

KNIME Server

KNIME Team Space

KNIME Professional

KNIME Desktop

## The KNIME Product Suite

### KNIME Desktop

Open-source platform for integrated data access, data mining, statistics, visualization, and reporting.

### KNIME Professional

Professional support on all KNIME features and priority bug fixes through a commercial agreement.

### KNIME Team Space

All KNIME Professional features plus shared workflow store, shared data space, shared metanodes.

### KNIME Server

All KNIME Team Space features plus remote and scheduled execution, user access rights, SOA integration, configurable web portal access to workflows and reports through a web browser.

### KNIME Cluster Execution

Submission of workflows to a compute cluster, distribution of single nodes, splitting of large data sets, and remote execution.

### About KNIME and KNIME.com AG

KNIME is the leading open-source analytics platform and is based on a modern graphical workflow paradigm. From day one, rigorous professional software engineering processes combined with cutting-edge data analytics and visualization techniques have been applied to produce state-of-the-art results. KNIME is used by professionals in both industry and academia in over 60 countries. Open-source KNIME, as well as the KNIME product suite are supported and continue to be developed by KNIME.com AG, an independent vendor located in Zurich, Switzerland. See [www.KNIME.com](http://www.KNIME.com) for more details.



KNIME.com AG  
Technoparkstr. 1  
8005 Zurich  
Switzerland

info@KNIME.com  
<http://www.KNIME.com>  
Tel: +41 44 445 2660  
Fax: +41 44 445 2662