



## Data Mining Workbench for Interactive Data Exploration

KNIME is a modern data analytics platform that allows you to perform sophisticated statistics and data mining on your data to analyze trends and predict potential results. Its visual workbench combines data access, data transformation, initial investigation, powerful predictive analytics and visualization. KNIME also provides the ability to develop reports based on your information or automate the application of new insight back into production systems. KNIME Desktop is open-source and available under GPL license. It can be extended to include professional support and large enterprise functionality, providing the best of both worlds. Take a look at KNIME Desktop, or better yet simply download it and use it for free - try it!

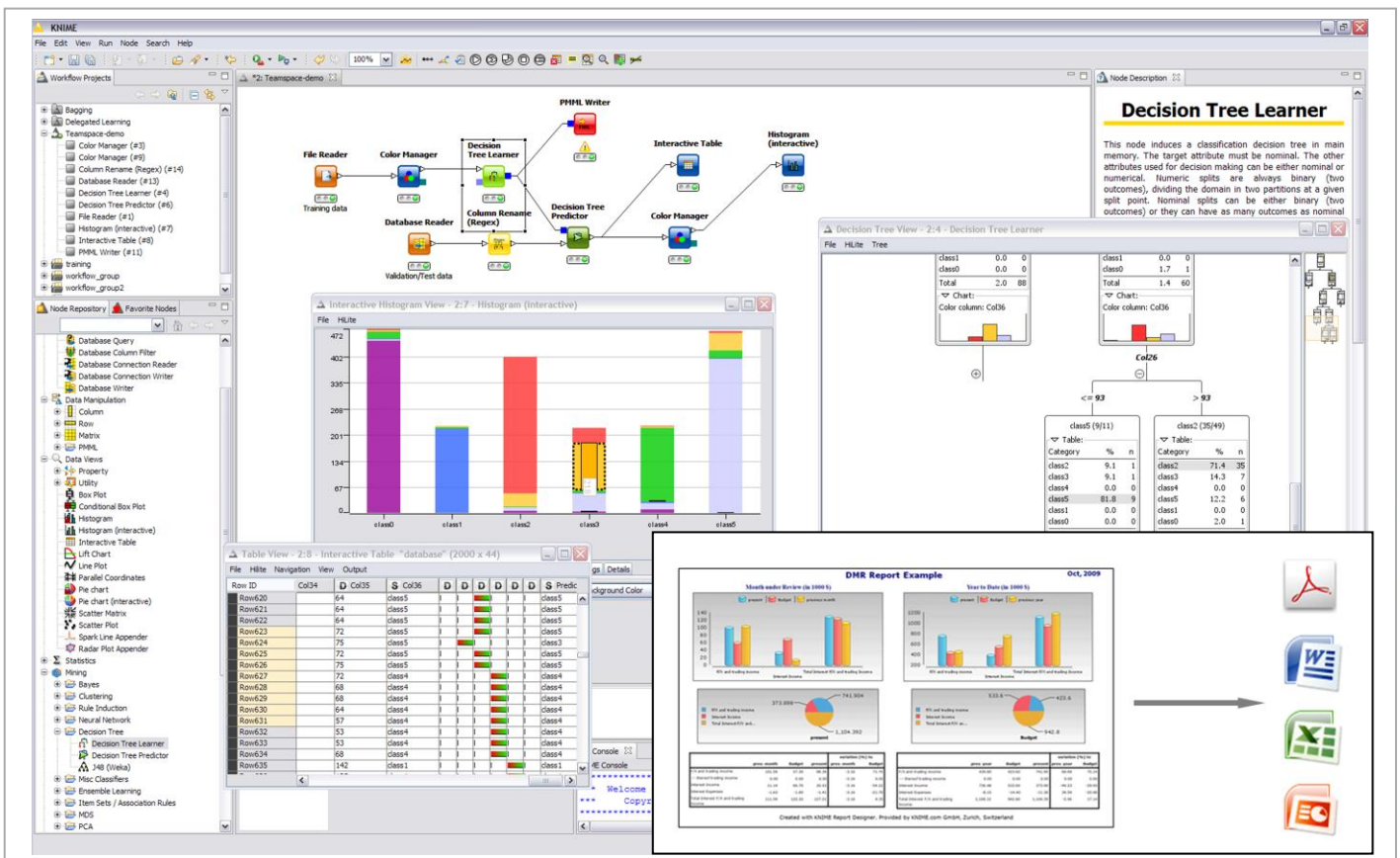


Figure 1: KNIME workflow that combines different data sources and uses mining techniques to analyze and explore your data

### Powerful Data Analytics

KNIME Desktop provides over 1000 data analytic routines, either natively or through R and WEKA, for such topics as:

- Univariate and Multivariate Statistics
- Data Mining
- Time Series
- Image Processing
- Web Analytics
- Text Mining
- Network Analysis
- Social Media Analysis

KNIME analytic workflows can not only be run through the interactive user interface but also in a batch execution mode, enabling the data analysis process to be easily integrated into your local job management run on a periodic basis.

### Integration Platform

Data integration from various sources including text files, databases and web services is a basic feature of KNIME. Data transformation and new data creation are all important components of KNIME. Through its open API KNIME is also a powerful tools integration platform. Basic KNIME can be extended not only by other open-source projects like Weka or R, but also by legacy tools. The very active KNIME community is constantly extending KNIME to include capabilities such as text processing, image analysis functionality and many others. For an even tighter integration the free development version allows the building of custom nodes.

### Report Designer

While KNIME Desktop delivers powerful data analysis capabilities, the free KNIME Report Designer extension enables you to use data and results as input for comprehensive reports, which you can store as templates, and create reports in common industry standard document formats such as PDF, XLS, DOC, PPT and others. Data from any part of the workflow can be used to create these reports and you can combine your input data, intermediate analysis steps and the final results in a single report. Not only can data be used in the reports, but graphics can also be added to your template layout. You can integrate KNIME into your existing reporting environment in a way that best suits you - either with KNIME as your source, or KNIME as your integrator.

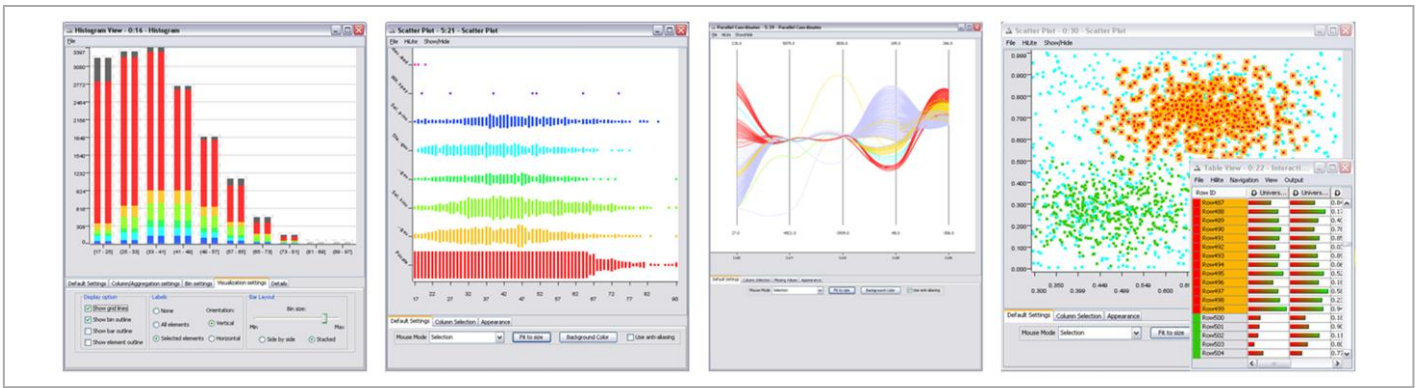


Figure 2: KNIME interactive visualizations lets you dive deep into your data

## Supported Open-Source

KNIME Desktop is released under an open-source license (GPL), but you can also run KNIME in a supported environment. KNIME.com, the company behind KNIME offers support and maintenance contracts for those customers that use KNIME in a professional manner and need to rely on a support hotline and priority bug fixes. Professional documentation and testing procedures ensure that KNIME satisfies all regulatory requirements. A dedicated KNIME team member is assigned to each customer guaranteeing continued support. KNIME Professional gives you advance access to releases of KNIME Desktop making you the first to know about and test new features of upcoming KNIME releases. KNIME Professional support is available for KNIME Desktop and KNIME Report Designer.

## KNIME Products

KNIME grows with your data analytics demand. If you are a frequent user of KNIME you can benefit from a support contract. Small teams can benefit from each other's work by sharing workflows using KNIME Team Space through a shared directory access. Also metanodes can be shared in a way that is perfect for supporting collaboration and reuse within the team. If you run KNIME in a corporate environment KNIME Server gives you all the features of KNIME Team Space. It also provides the environment to host, execute and schedule KNIME workflows centrally, integrate within your SOA, and provides an access controlled web interface for your integrated data analytics and reporting platform. See the box below for more details on the KNIME product suite or visit our website at [www.KNIME.com](http://www.KNIME.com).

## Software & Licensing

### Operating Systems

#### Windows

Windows XP, 2000, Vista, Win 7, Server 2008 (32 and 64 bit)

#### Linux

SUSE 10 and 11, Fedora 10, Red Hat Enterprise 5, Ubuntu (32 and 64 bit)

#### Mac

OS X 10.5 Leopard, 10.6 Snow Leopard

### Licensing

KNIME Desktop is available under an open-source (GPL) license. KNIME Report Designer is a free extension from KNIME.com. Support packages are available for KNIME. See KNIME Professional below.

Cluster Execution

KNIME Server

KNIME Team Space

KNIME Professional

KNIME Desktop

## The KNIME Product Suite

### KNIME Desktop

Open-source platform for integrated data access, data mining, statistics, visualization, and reporting.

### KNIME Professional

Professional support on all KNIME features and priority bug fixes through a commercial agreement.

### KNIME Team Space

All KNIME Professional features plus shared workflow store, shared data space, shared metanodes.

### KNIME Server

All KNIME Team Space features plus remote and scheduled execution, user access rights, SOA integration, configurable web portal access to workflows and reports through a web browser.

### KNIME Cluster Execution

Submission of workflows to a compute cluster, distribution of single nodes, splitting of large data sets, and remote execution.

### About KNIME and KNIME.com AG

KNIME is the leading open-source analytics platform and is based on a modern graphical workflow paradigm. From day one, rigorous professional software engineering processes combined with cutting-edge data analytics and visualization techniques have been applied to produce state-of-the-art results. KNIME is used by professionals in both industry and academia in over 60 countries. Open-source KNIME, as well as the KNIME product suite are supported and continue to be developed by KNIME.com AG, an independent vendor located in Zurich, Switzerland. See [www.KNIME.com](http://www.KNIME.com) for more details.



KNIME.com AG  
Technoparkstr. 1  
8005 Zurich  
Switzerland

info@KNIME.com  
<http://www.KNIME.com>  
Tel: +41 44 445 2660  
Fax: +41 44 445 2662